

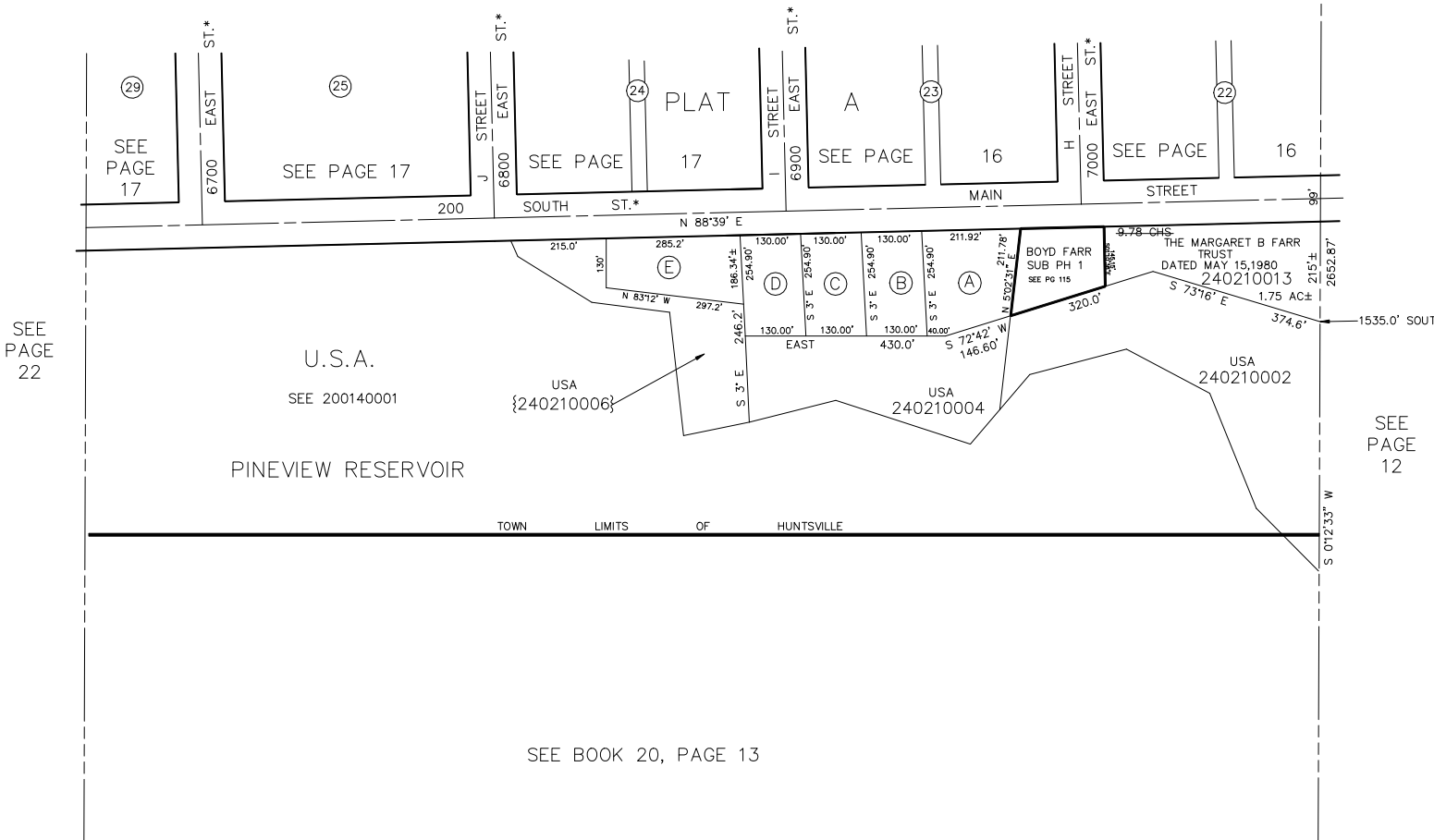
PART OF N.E. 1/4
SECTION 13, T.6N., R.1E., S.L.B. & M.

IN TOWN OF HUNTSVILLE

TAXING UNIT: 35

SCALE 1" = 200'

N.E. COR OF
SEC. 13



SEE PAGE 22

SEE PAGE 12

SEE BOOK 20, PAGE 13

| | | |
|---|--|--|
| (A) ROBERT L HUBERT & WF MYRNA G 240210003 1.07 AC± | (B) RICHARD H MARTY & NANCY E MARTY TRUSTEES 240210009 33,092 SQ FT | (C) ROCK E HARPER & WF SANDRA J 240210008 33,092 SQ FT |
| (D) D RAINER KOLB 240210007 33,092 SQ FT | (E) GLEN ASHTON LLOYD & WF 240210005 33,092 SQ FT | |

*NOTE: STREET NUMBERS
ACCORDING TO COUNTY
SURVEYOR.